



HSSE

(Health, Safety, Security, Environment)

Management System Manual

BNL Co., Ltd.

#68, SINHANGBUK-RO, KANGSEO-GU,

BUSAN, KOREA #46767

TEL:(+82)51-290-6752 / FAX:(+82)51-290-6759

1. Introduction

2. HSSE Management System Overview

2.1 Objective and Scope

2.2 Major Features

2.3 Commitment

2.4 Basic rules BNL must follow

2.5 Standards

3. HSSE Management System

3.1. Organization & Mission

3.2 HSE Training

3.3 Security System

3.4 Safe Driving Regulation for BNL visitors

1. Introduction

BNL Co., Ltd. is established in December 2010, as the logistics company at the hinterland area in Busan new port. We provide integrated logistics services, such as warehousing, customs clearances, transportation(trucking), value-added services(Receiving Inspection & Preservation), etc.

2. HSSE Management System Overview

This section provides an overview of the HSSE (Health, Safety, Security and Environment) Management System Manual, including its objectives, scope and major features and its operation in BNL.

2.1 Objective and Scope

BNL objectives are to:

- ✓ **Prevent incidents, eliminate or reduce hazards and improve HSE performance at our operations**
- ✓ **Ensure minimum compliance with legislative requirements**
- ✓ **Provide a platform for continuous improvement**

To achieve these objectives the HSE management system covers the following

- ✓ **All areas and operational aspects at our location that have the potential to affect the health and safety of people of the environment**
- ✓ **All relevant legislation and other requirements**
- ✓ **All elements of HSE management**

2.2 Major Features

The major features of the HSE management system are as follows.

- ✓ **It is an integrated management system that covers occupational health and safety, and environment, and meets the requirements of:**
 - ✚ the company operational requirements
 - ✚ all relevant legislation
- ✓ **It is a comprehensive system incorporating all operational areas and all working conditions and activities (including contractors) that have the potential to affect the health and safety of people or the environment.**

2.3 Commitment

BNL makes commitment and policy on health, security, safety, the environment and social performance

In BNL we are all committed to :

- ✓ **Pursue the goal of no harm to people**
- ✓ **Protect the environment**
- ✓ **Use material and energy efficiently in order to provide quality services**
- ✓ **Respect our neighbors and contribute to the societies in which we operate**
- ✓ **Play a leading role in promoting best practice in our industries**
- ✓ **Manage HSSE matters as any other critical business activity**
- ✓ **Promote a culture in which all BNL employees share this commitment.**

In this way we aim to have an HSSE performance we can be proud of, to earn the confidence of customers, shareholders and society at large, to be a good neighbor and to contribute to sustainable development.

Simply obeying safety rules is not enough. BNL's commitment to safety means each of us needs to be alert to safety risks as we go about our jobs.

2.4 Basic rules BNL must follow

Always

- ✓ **Comply with the requirements of the HSSE management system at our work location – including the use of relevant standards, instructions and processes.**
- ✓ **Stop any work that becomes unsafe.**
- ✓ **Only undertake work for which you are trained, competent, medically fit and sufficiently rested and alert to carry out.**
- ✓ **Make sure you know what to do if an emergency occurs at your place of work.**
- ✓ **Help ensure that those who work with you – employees, contractors and other third parties**

Never

- ✓ **Undertake work when your performance is impaired by alcohol or other drugs, legal or illegal, prescribed or otherwise.**
- ✓ **Possess, use or transfer illegal drugs or other substances on company premises.**
- ✓ **Use threats, intimidation or other violence at work, or bring weapons on company premises.**

2.5 Standards

The Standards are a set of relatively brief statements which set out the requirements in relation to a range of issues which have the potential to affect the safety and health of people, or the environment. The Standards are effectively an expansion of the Policies and are high level statements that define 'what' has to be achieved in relation to HSE, without including any prescriptive requirements as to exactly 'how' these requirements are to be met.

- ✓ **The standards are as follows**
- ✓ **Accountability and Commitment**
- ✓ **Planning and Resources**
- ✓ **Legal Compliance**
- ✓ **Hazard and Risk Management**
- ✓ **Training and Competency**
- ✓ **Incident Investigation and Reporting**
- ✓ **Performance Measurement**

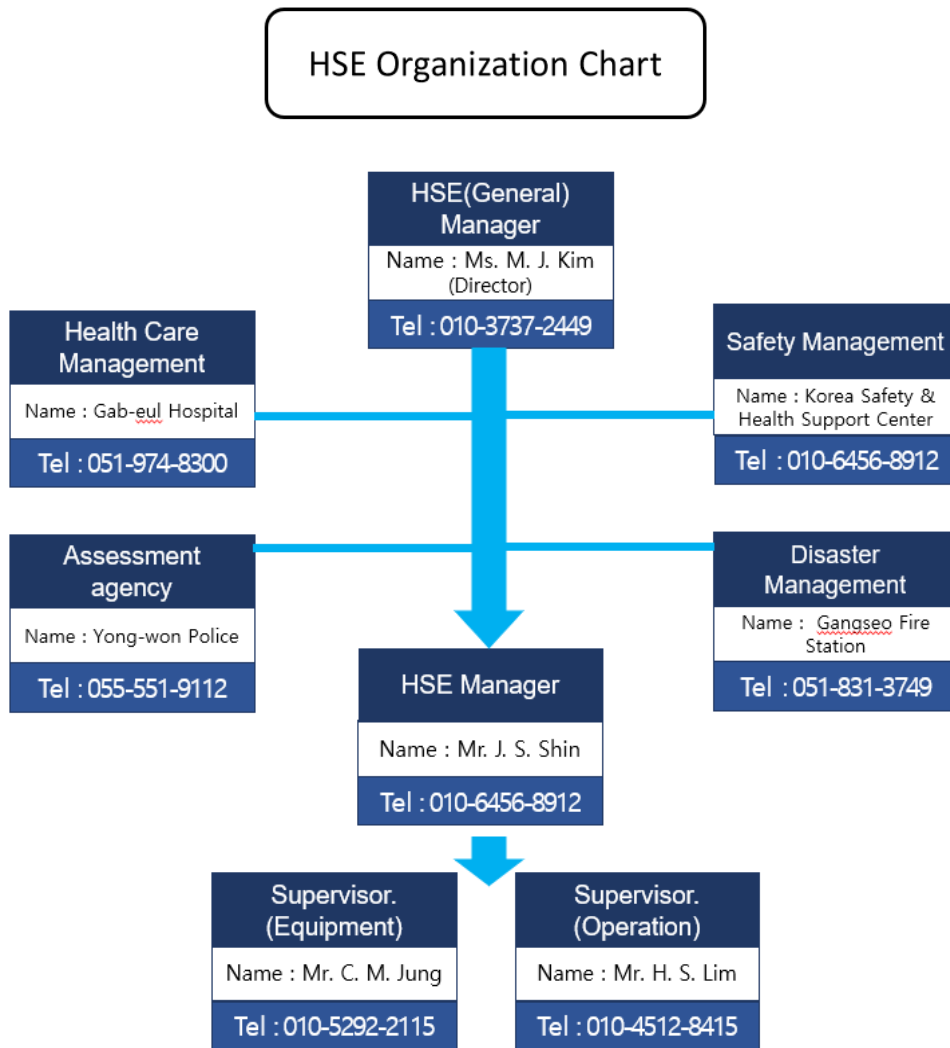
- ✓ **Audits and Inspections**
- ✓ **Facility and Equipment Integrity**
- ✓ **Fitness for Work**
- ✓ **Waste Management**
- ✓ **Resource Management**

3. HSSE Management System

This section describes the general information of the HSSE Management System.

3.1. Organization & Mission

Organization

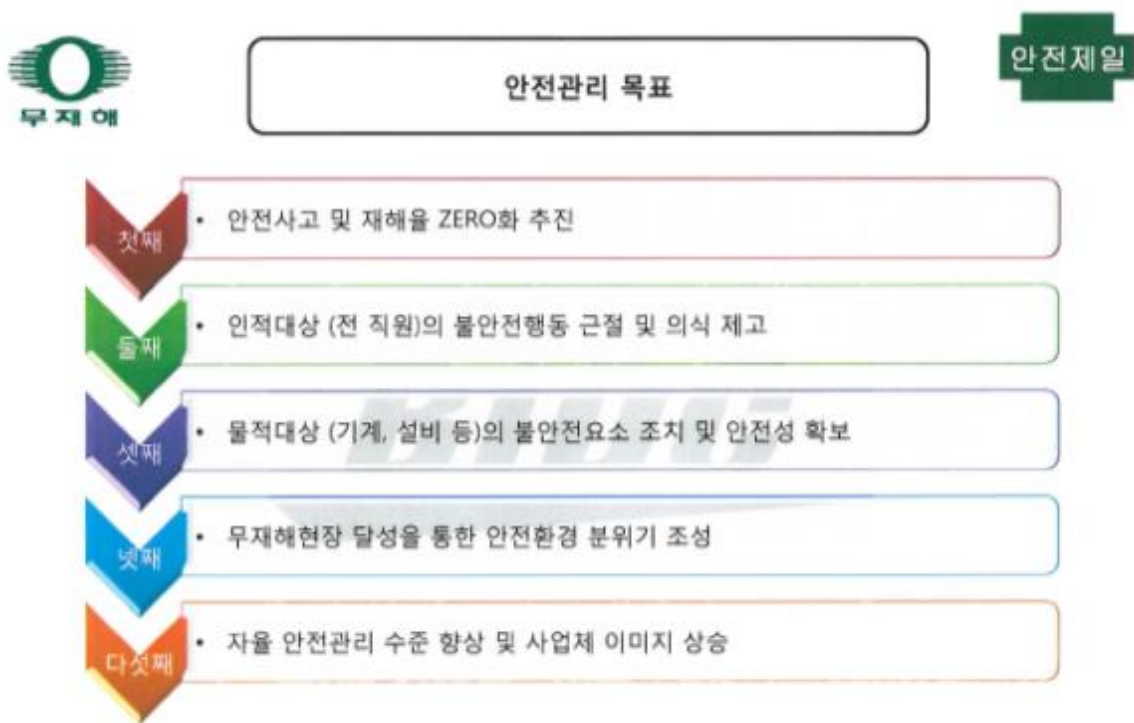


- | | |
|--|---|
| <p>A. Safety & Health Manager(Industrial Health & Safety Law Art 13)</p> <ul style="list-style-type: none"> ▪ Establish Industrial Disaster Prevention Matter ▪ Write and alteration regarding HSE rules ▪ Employees safety / health education ▪ Measure & inspect work environment and improvement ▪ Employees health check-up and health management ▪ Cause investigate industrial disaster and establish relapse prevention ▪ Purchase safety / health related equipment and verify eligible product ▪ Therewithal certified & trained and registered to ministry of employment and labor | <p>B. Safety Management(Industrial H&S Law Art13)</p> <ul style="list-style-type: none"> ▪ Support establishing workplace safety training ▪ Periodical inspection and guidance ▪ Cause investigate industrial disaster and advice and train relapse prevention ▪ Suggest measure of employees with violation ▪ Therewithal all in relation of safety and certified by ministry on employment and labor |
| <p>C. Health Care Management (Industrial H&S Law Art13)</p> <ul style="list-style-type: none"> ▪ In relation of health and healthcare matter, under decree of above law. Appoint Go-shin hospital as health | |

Job & Certi of HSE Manager in BNL

Name	Job	Certi.	Contact
J.H.Byun	HSE & Facility Manager	Industrial Health & Safety and Electrical Safety and Technology	010-8548-8016

Mission



BNL Safety Management Target

1. Propel zero safety accident and accident rate!
2. Eradication of all employees unsafe behaviors and awareness!
3. Measure all unsafe elements of equipment and machinery and secure safety!
4. Futherance safe work envorinment atmosphere through accident-free work place!
5. Improve autonomy safety management standard and improve company image!

3.2 HSE Training

Safety Training Schedule :

- 1) Daily
- 2) Periodically (Every 1 month)
- 3) Non-scheduled (Case-by-case)

<For All New employment Hand book Issued after HSE Training in DSME>

HSE Contents

Reference Manual Book

Safety Handbook / HSE Training Handbook



Safety Hand Book

- General Safety
- Occupation Safety and Health Acts.
- 7 Safety Rules And Safety Standard
- Standard of Tool Management
- Safety Checklist
- Health Management
- Environment Management

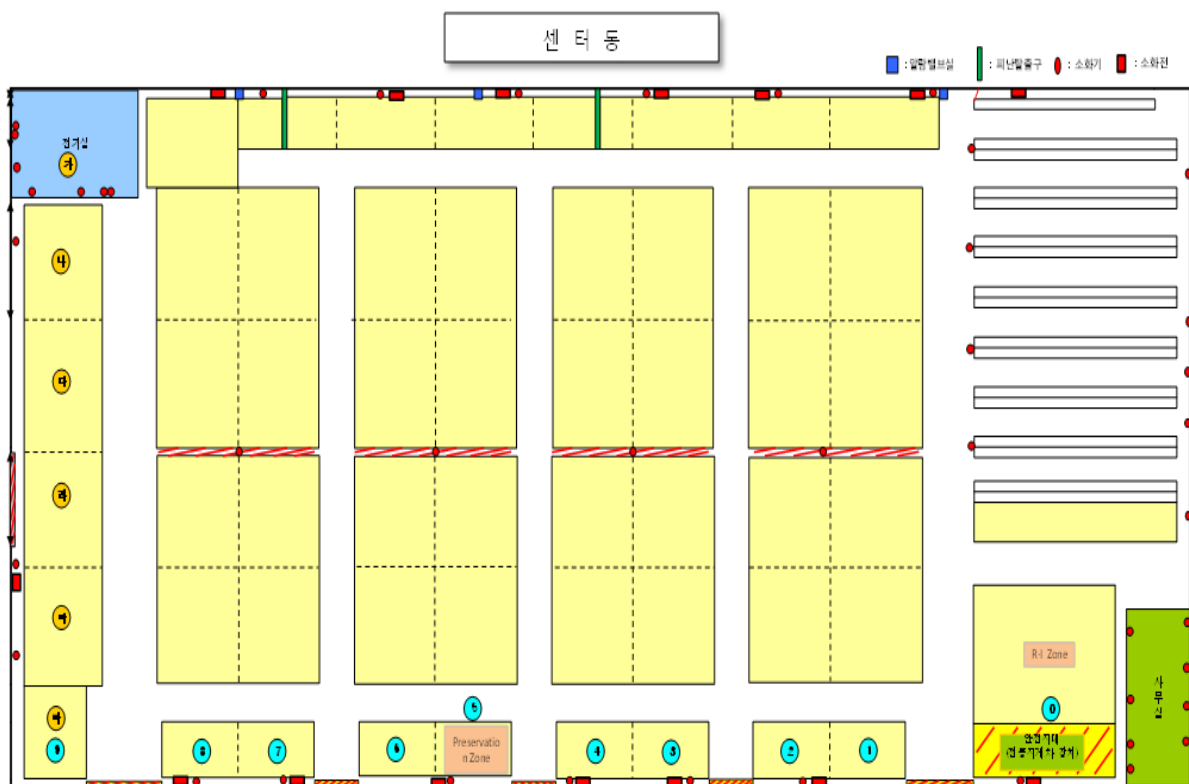
Education & Training for HSE

- Introduction About HSE
- Occupation Safety and Health Acts.
- General Knowledge Of Safety
- 12 Important Safety Rules
- Safety Standard
- Safety Rule about Handling Tool
- Industrial Health Management

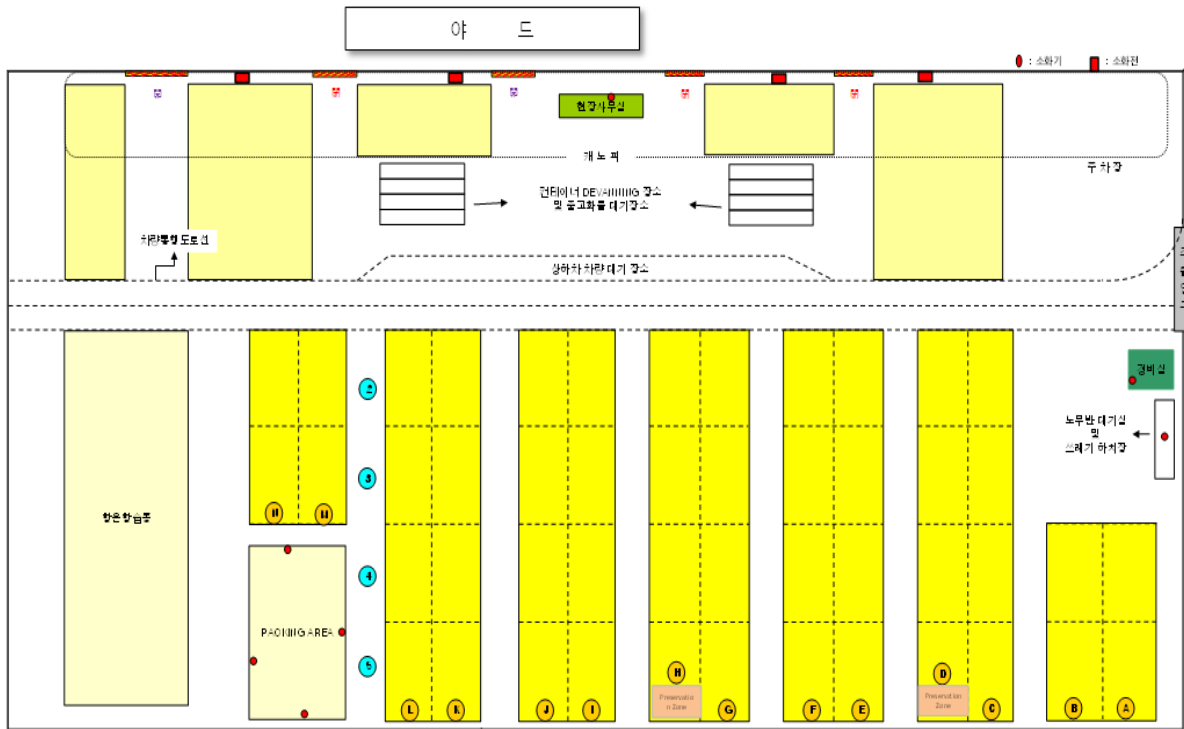
Fire drill

BNL goes through intensive fire drill trainings once a year in connection with local fire station.
(Busan Gangseo Fire Station)

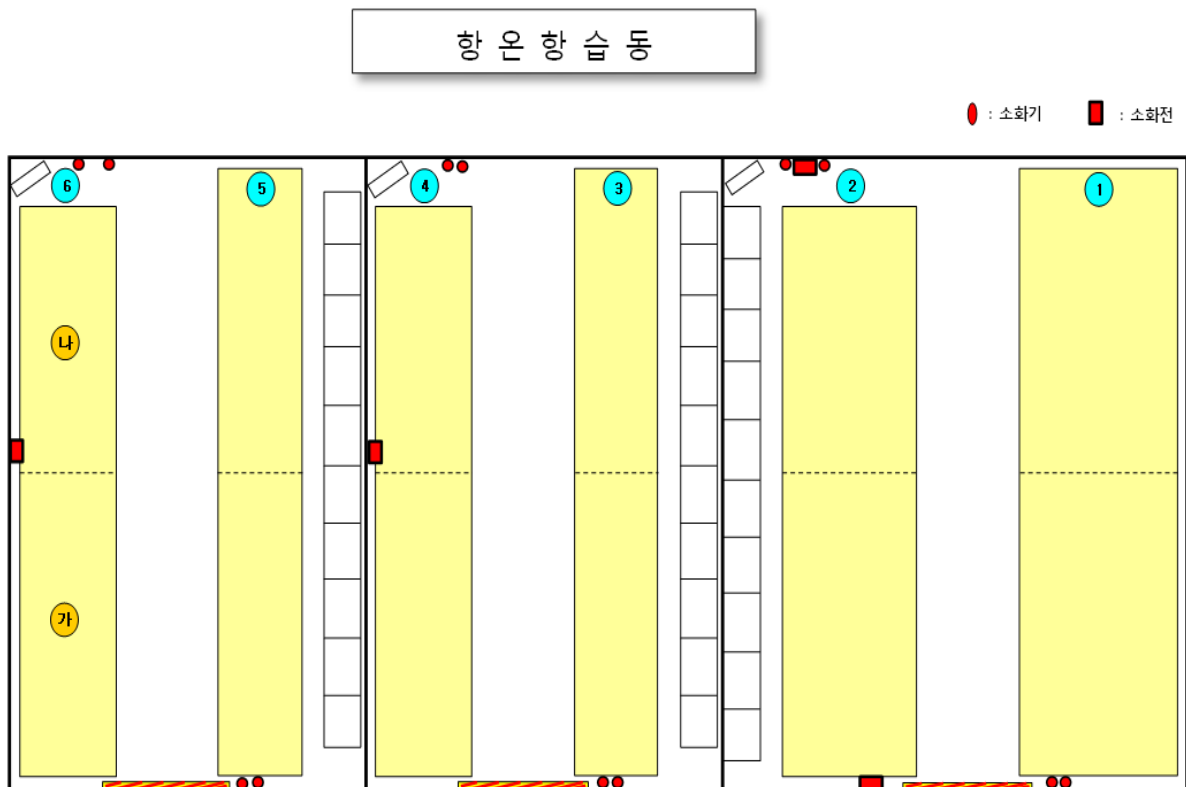
Our fire drill offers highly various programs including extinguishing the fire, first aid, emergency transport, etc.



<Fire Extinguisher/Hydrant Layout - Indoor Storage>



<Fire Extinguisher/Hydrant Layout - Outdoor Storage>



<Fire Extinguisher/Hydrant Layout - Temperature Controlled Storage>

3.3 Security System

BNL has safe and well-organized security systems that consist of 3 stages as below.

Stage 1

Security by Government because BNL is located in FTZ(Free Trade Zone) / FEZ(Free Economic Zone).

: FTZ/FEZ is monitored and watched by NIS(National Intelligence Service) and Police.

Stage 2

Security by Customs because BNL is one of Bonded Areas in the hinterland area of Busan New Port.

Stage 3

Security by BNL's own-security system

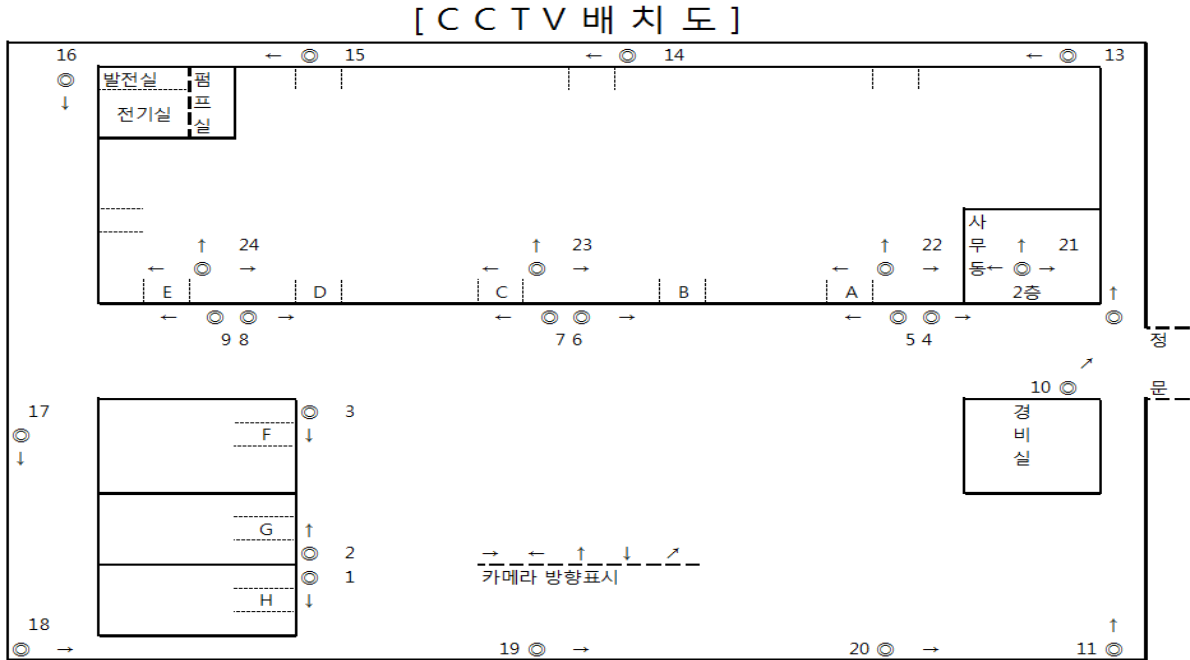
1. Security services for 24 hours, 365 days.
 - 1 entrance gates in BNL
2. Total 24 CCTV in BNL



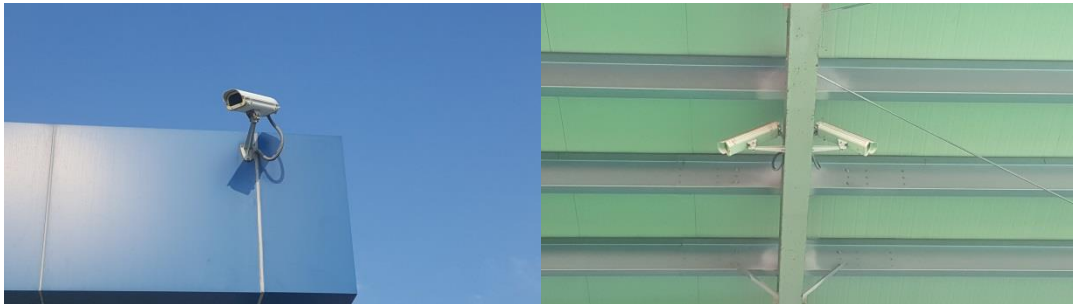
Main Entrance

BNL HSSE Equipment

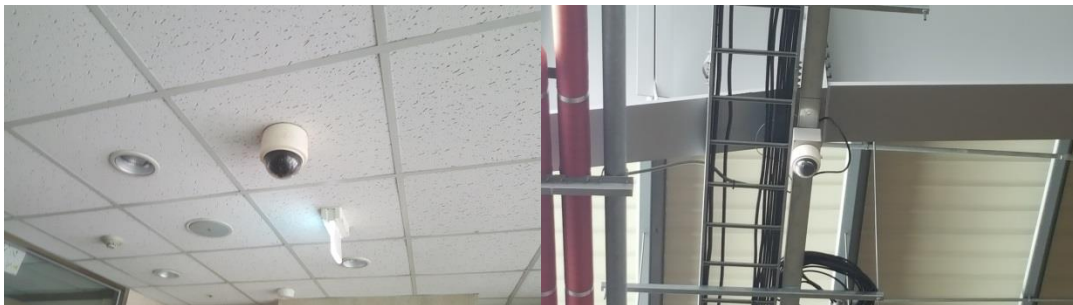
CCTV



<Layout>



<Outdoor>



<Indoor>



<CCTV monitoring in Security office>

Infrared Sensing Device



Etc.



<Speaker>



<Fire extinguisher>



<Fire detector>



<Emergency Exit>



<Light>

3.4 Safe Driving Regulation for BNL visitors

Every day many vehicles such as trucks, trailers and private cars go in and out BNL in order to transport cargo. In order to avoid any incidents, BNL distributes the Safe Driving Regulation to all visitors with vehicle.

For further detailed, please contact BNL safety manager.

Safety First



Thank You.

